

LE STUDIO ÉBÈNE



PERFECT COUNTRYSIDE GETAWAY

A studio with ethnic decorative touches in a former greenhouse keeper's house, ideal for a romantic getaway or peaceful remote work.



LOCATION

The studio is situated in Hoeilaart, in the main house of the estate, on the 2nd floor, 10 minutes from the entrance to Brussels, near the Sonian Forest. Accessible by train (2 stations: Groenendaal and Hoeilaart) and De Lijn bus.

DESCRIPTION

A spacious attic room of 6x5m with an "African" style, featuring:

Sleeping: a sleeping area with a king-size bed (180 x 200cm).

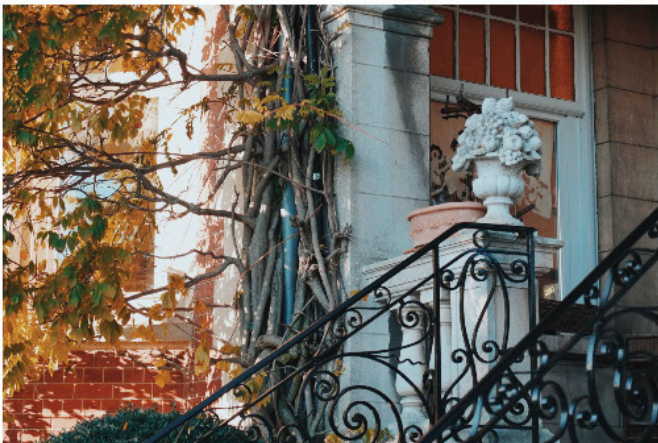
Small kitchen: sink with hot and cold water, hob, microwave, fridge, electric kettle, Nespresso coffee machine, dishes, cutlery, glasses, and cookware.

Dining area: 1 table and 4 chairs.

Living room: a lounge area with 2 comfortable armchairs.

Bathroom: a large bathroom with a bathtub, double sink, toilet, dressing table, toiletries, and a hairdryer.

If needed, a second room with a "Marrakech" style is available (also for 2 people) with its separate bathroom.



NEARBY

The Sonian Forest and numerous horse riding facilities, Solvay Castle and the Folon Museum in La Hulpe, the Lion of Waterloo, Lake Genval, the Druivenmuseum in Overijse, the Bosmuseum in Groenendael, many restaurants in Notre-Dame au Bois, the city of Leuven, and the Dijle Valley region, the Royal Museum for Central Africa in Tervuren.

RATES 2023

Nightly rate: €95/night with a minimum of 2 nights - Marrakech room: same rate

Weekly rate: €600/unit

PAYMENT TERMS

A 30% deposit is required upon reservation to secure the date.

In case of client cancellation:

- **1 week before arrival:** 50% of the total amount
- **Less than 2 days:** the deposit is retained

The balance must be paid on the day of arrival in cash or in advance by bank transfer.

LE STUDIO ÉBÈNE

Cécile MOTTET-CAERS

42, Edmond Vandervaerenstraat, 1560 Hoeilaart, Belgium

E-mail: cecile.caers@gmail.com

Phone and WhatsApp: +32 (0)473.54.90.14